



# Store Trader

Easy. Reliable. Functional. Fast.

The world's best-designed PoS software.

**StoreTrader was designed for retail environments by retail experts.**

**Today, StoreTrader is trusted by all retail sectors from independent specialist shops to well-known retail chains.**

**With our ongoing commitment to product development, they're assured that we'll continue to provide them with the world's best-designed PoS software.**

## Easy.

Runs on any PC or PoS terminal, with look-and-feel familiar to any Windows user.

## Reliable.

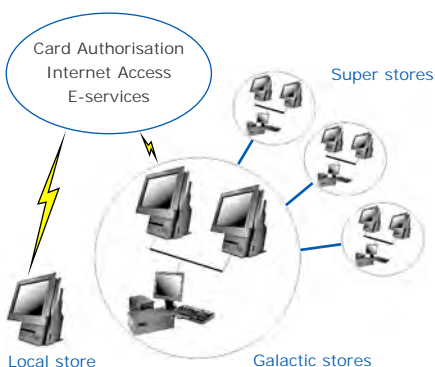
Database integrity maintained even if system or networks components fail.

## Functional.

Extensive feature set and seamless integration with back office systems.

## Fast.

Designed to manage high transaction volumes on any scale.



*StoreTrader scales from a single-till store right up to a large multinational enterprise.*

**PURPOSE** StoreTrader is a software product designed to manage sales transactions through PoS terminals and tills in any Retail environment.

**CHARACTERISTICS** Easy to install & operate; auto-recovers hardware and system failures; wide range of capabilities, including card processing support, built-in; modifiable by authorised users without IT knowledge; designed for high volumes and fast response; the same system runs on counter-top or hand-held mobile terminals.

**APPLICATIONS** Supermarkets & convenience stores; Department stores; High Street stores of all types; Event merchandisers such as sports clubs; Food & beverage sales, particularly where a mobile unit is required.

**HARDWARE DEVICES** StoreTrader will run on any Windows PC-based system, with touch screens or keyboards and a wide range of barcode scanners, magnetic card readers and other till hardware.

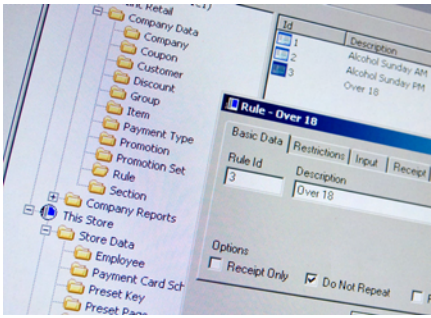
**SYSTEM STRUCTURE** StoreTrader is packaged in three major components. The POS module runs in the terminal or till and manages the point of sale transactions; the Store Server runs on a suitable PC networked with the PoS terminals in a store, and maintains a copy of all the PoS terminal data including sales transactions minute by minute; and the Enterprise Server communicates with Store Servers or directly with PoS terminals to consolidate data, produce reports and push down price, stock and other changes. However, it is possible to run the entire system on a single PoS terminal (not a hand-held) to save space and cost in small stores. Optional software extensions manage interfaces to other systems and functions such as portable stock check.

**POS CAPABILITIES** More than a dozen user-selectable display layouts to support different store applications – such as supermarket checkout, bakery or food & beverage

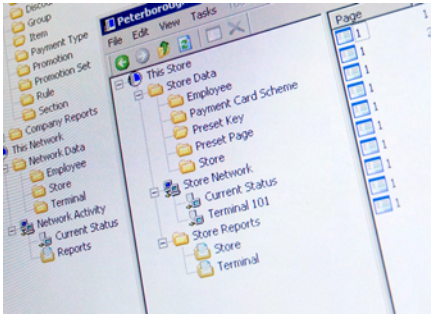
- User definable function keys
- Optional Web browser for internet or intranet and email
- Customer display
- Item entry by barcode, number, selection from list, weight, size or length
- Cash and cash-back, cheque, card and account sales, exchanges & returns
- System-predicted tender amount
- 'No sale', void, suspend & retrieve from any till
- Multi-currency, including Euro
- Coupons and vouchers, including support for mobile phone coupon distribution via the M-Bar-Go™ Club
- Tax and duplicate receipt printing
- Float pickup
- Training mode
- Security sign-on

**SYSTEM FACILITIES** Manager, Supervisor and Operator authorities with IDs and passwords

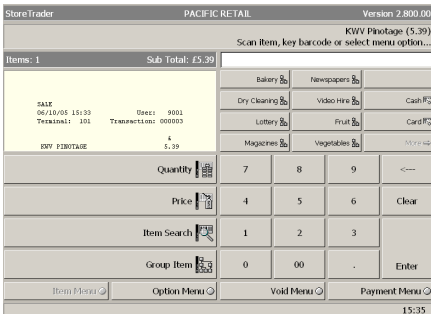
- Separate Windows-like Terminal Manager display layout for system setup and modification
- System 'Wizards' to guide users through setup and prevent data inconsistencies
- User-definable promotions & deals ('buy one, get one free', buy any three for £4', 'buy any item from this set and get one from this set at half price')
- Transaction Rules to allow user-defined system management of any transaction – for example an under-age check on alcohol or DVD sales. Rules can be linked to provide almost unlimited processing
- Simplified Stock management, including Supplier records, Product & Item records, multiple barcodes per Item, and support for very large Item files
- Consolidated EFT communications for card processing, including chip & pin support
- Support for mobile phone top-up, Lottery and other e-services
- Always-on or dial-up communication between Enterprise



*StoreTrader Terminal Manager provides a fast, simple way to manage products and to define business rules.*



*StoreTrader Enterprise Server provides all the tools needed to remotely distribute pricing and other information to stores, and to interrogate the system for real-time transaction information.*



*Configure the till interface just as you need it, with conventional or touch-screen access.*

Servers and Store Servers or PoS terminals

- Real-time and end of day reporting
- Reports include activity by operator, terminal etc; cash drawer report; hourly sales; group sales; item sales; user sales; sales history; and many more

**INTERFACES** StoreTrader links with other software applications such as Order Processing, Payroll and Accounting through csv, ODBC and XML

- Sales Order systems may invoke StoreTrader to provide payment processing after creating and passing a sales order
- A specially-designed interface provides a real-time link to the Sage Line 50™ accounting system, making the two systems virtually one
- A generic accounting link provides postings for Nominal, Stock and Sales ledgers
- Export tools provide detailed data to standard reporting packages

**MOBILE POS** The same StoreTrader software also runs on Windows Mobile hand-held devices

- Links to Mobile Server for printing and EFT
- Useful for cafes and restaurants and for queue-busting at peak times
- Windows PDAs with barcode scanners make stock checking easy and fast

**SYSTEM MANAGEMENT** Real-time update of price, stock, employee and all other data by authorised manager

- Data changes automatically replicated across all stores and PoS terminals
- StoreTrader constantly replicates key data between PoS terminals and Server
- PoS terminals can run for days without the Server
- Automatic recovery of database and roll-forward or roll-back after a system failure, with no

user awareness

- No system-imposed limits on file sizes or record numbers
- User-modifiable scripts control end of day and other background or periodic processes
- Email distribution of reports
- Extensive command list to support problem diagnosis and resolution
- Easy backup of all related data for archive and reporting
- The Audit Viewer shows everything that happens at a PoS terminal, as it happens
- Any PoS terminal is visible to authorised managers up to Enterprise (head office) level, and even remotely.

**PRODUCT SUPPORT & DEVELOPMENT** Pacific Retail is dedicated to the future of StoreTrader: the product is constantly evolving

- The same designer has been developing the product since inception
- Support options include 24/7
- Dedicated Web-based support and product distribution
- Distributors provide a pool of installation and operational experience
- Regular new releases incorporate problem fixes and improvements
- New versions provide extensive new facilities

**SOFTWARE TECHNOLOGY** Layered and highly modular architecture, for small executable size and fast response

- Asynchronous messaging to avoid queues and locks
- Based on C++ and Microsoft Foundation Classes, with Java extensions
- Formal specification, development and documentation standards
- Extensive pre-release regression testing ensures StoreTrader retains its reputation for consistency and reliability.



**Store  
Trader**

Pacific Retail Systems Limited, 2 Tesla Court, Innovation Way, Lynch Wood, PETERBOROUGH PE2 6FL

Telephone +44 (0)1733 396 710

info@pacificretailsystems.com  
www.pacificretailsystems.com



Some system features are optional, and may attract an additional charge.

This is not an exhaustive summary. StoreTrader capabilities are constantly evolving and may change without notice. You should verify that the system meets your own application needs.

© Pacific Retail Systems. All Rights Reserved. E&OE.